



Making the switch?

Ready to make the switch to Duncan Concepts? Congratulations! These beautiful underglazes offer effortless coverage; and the superior selection make them a studio favorite. Below you'll find a conversion chart for your reference as you switch from your current line to Duncan color. Please remember that each line of color varies slightly. Because of this, these are color suggestions, not exact matches.

Mayco #	Mayco Color	Duncan #	Duncan Color	Gare #	Gare Color
SC-55	Yella Bout It	CN-011	Light Straw	FS-2349	Tweety Bird
SC-06	Sunkissed	CN-012	Bright Straw	FS-2349	Tweety Bird
SC-42	Butter Me Up	CN-013	Dark Straw	FS-2315	What a Yolk
SC-42	Butter Me Up	CN-021	Light Saffron	FS-2315	What a Yolk
SC-24	Dandelion	CN-022	Bright Saffron	FS-2301	Smiley Face
SC-24	Dandelion	CN-031	Light Butternut	FS-2364	Butterscotch
SC-24	Dandelion	CN-032	Bright Butternut	FS-2368	Old Yeller
SC-51	Poo Bear	CN-033	Dark Butternut	FS-2368	Old Yeller
SC-05	Tiger Tail	CN-041	Light Papaya	FS-2377	Pumpkin Pie
SC-22	Carrot Top	CN-042	Bright Papaya	FS-2317	Arizona Sun
SC-25	Crackerjack Brown	CN-043	Dark Papaya	FS-2377	Pumpkin Pie
SC-22	Carrot Top	CN-052	Bright Tangerine	FS-2317	Arizona Sun
SC-02	Melon-Choly	CN-061	Light Salsa	FS-2343	Peachy Keen
SC-50	Orange Ya Happy	CN-062	Bright Salsa	FS-2302	Orange Peel
SC-04	Salsa	CN-063	Dark Salsa	FS-2379	Simply Cinnamon
SC-04	Salsa	CN-071	Light Scarlet	FS-2379	Simply Cinnamon
SC-73	Candy Apple Red	CN-072	Bright Scarlet	FS-2317	Arizona Sun
SC-82	Tuscan Red	CN-073	Dark Scarlet	FS-2327	Blazing Saddle
SC-74	Hot Tamale	CN-074	Really Red	FS-2391	Red Blaze
SC-17	Cheeky Pink	CN-081	Light Wine	FS-2308	In the Pink
SC-70	Pink-A-Dot	CN-082	Bright Wine	FS-2393	Pretty in Pink
SC-03	Wine About It	CN-083	Dark Wine	FS-2376	Bouncin' Berry
SC-65	Peri-Twinkle	CN-101	Light Heather	FS-2354	Something Blue
SC-53	Purple Haze	CN-102	Bright Heather	FS-2353	Grape Slush
SC-33	Fruit of the Vine	CN-103	Dark Heather	FS-2336	Wineona
SC-65	Peri-Twinkle	CN-111	Light Delft	FS-2386	Pail Blue
SC-31	The Blues	CN-112	Bright Delft	FS-2354	Something Blue
SC-12	Moody Blues	CN-113	Dark Delft	FS-2306	Blue-By-U
SC-30	Blue Dawn	CN-121	Light Nautical	FS-2337	Li'l Boy Blue
SC-58	501 Blues	CN-122	Bright Nautical	FS-2355	Nantucket Blue
SC-32	Bluebeard	CN-123	Dark Nautical	FS-2338	Galaxy

Mayco #	Mayco Color	Duncan #	Duncan Color	Gare #	Gare Color
SC-11	Blue Yonder	CN-131	Light Tidepool	FS-2305	Blue Heaven
SC-29	Blue Grass	CN-132	Bright Tidepool	FS-2337	Li'l Boy Blue
SC-29	Blue Grass	CN-133	Dark Tidepool	FS-2338	Galaxy
SC-45	My Blue Heaven	CN-141	Light Aqua	FS-2354	Something Blue
SC-11	Blue Yonder	CN-142	Bright Aqua	FS-2305	Blue Heaven
SC-45	My Blue Heaven	CN-151	Light Blue Spruce	FS-2354	Something Blue
SC-09	Jaded	CN-152	Bright Blue Spruce	FS-2329	Hi Ho Silver
SC-10	Teal Next Time	CN-153	Dark Blue Spruce	FS-2310	Teal Tomorrow
SC-43	Lettuce Alone	CN-161	Light Wintergreen	FS-2324	Hint-O-Mint
SC-07	Leapin' Lizard	CN-162	Bright Wintergreen	FS-2340	Double Mint
SC-36	Irish Luck	CN-163	Dark Wintergreen	FS-2304	Green Acres
SC-43	Lettuce Alone	CN-171	Light Kelp	FS-2324	Hint-O-Mint
SC-08	Just Froggy	CN-172	Bright Kelp	FS-2325	Happy Go Lucky
SC-36	Irish Luck	CN-173	Dark Kelp	FS-2304	Green Acres
SC-52	Toad-ily Green	CN-181	Light Kiwi	FS-2373	Key Lime Pie
SC-39	Army Surplus	CN-182	Bright Kiwi	FS-2378	Pea Soup
SC-63	Popeye's Favorite	CN-183	Dark Kiwi	FS-2361	Leap Frog
SC-60	Silver Lining	CN-201	Light Grey	FS-2371	Coffee-N-Cream
SC-35	Gray Hare	CN-202	Bright Grey	FS-2329	Hi Ho Silver
SC-35	Gray Hare	CN-203	Dark Grey	FS-2329	Hi Ho Silver
SC-60	Silver Lining	CN-211	Light Taupe	FS-2371	Coffee-N-Cream
SC-83	Tip Taupe	CN-212	Bright Taupe	FS-2371	Coffee-N-Cream
SC-35	Gray Hare	CN-213	Dark Taupe	FS-2329	Hi Ho Silver
SC-54	Vanilla Dip	CN-221	Light Brush	FS-2318	The Naked Truth
SC-20	Birthday Suit	CN-222	Bright Brush	FS-2370	Buck Naked
SC-14	Java Bean	CN-232	Bright Briarwood	FS-2366	Chocolate Moose
SC-34	Down to Earth	CN-233	Dark Briarwood	FS-2313	Happy Trails
SC-16	Cottontail	CN-241	White	FS-2300	Polar Bear
SC-16	Cottontail	CN-244	Really White	FS-2300	Polar Bear
SC-15	Tuxedo	CN-253	Dark Black	FS-2314	Black Lab
SC-53	Purple Haze	CN-261	Light Grape	FS-2353	Grape Slush
SC-33	Fruit of the Vine	CN-262	Bright Grape	FS-2336	Wineona
SC-71	Purple-licious	CN-263	Dark Grape	FS-2312	Black Raspberry
SC-09	Jaded	CN-271	Light Jade	FS-2324	Hint-O-Mint
SC-09	Jaded	CN-272	Bright Jade	FS-2361	Leap Frog
SC-83	Tip Taupe	CN-281	Light Brown	FS-2371	Coffee-N-Cream
SC-48	Camel Back	CN-282	Bright Brown	FS-2327	Blazing Saddle
SC-85	Orkid	CN-291	Light Purple	FS-2311	The Color Purple
SC-72	Grape Jelly	CN-292	Bright Purple	FS-2320	Grape Escape
SC-71	Purple-licious	CN-293	Dark Purple	FS-2312	Black Raspberry
SC-11	Blue Yonder	CN-302	Bright Caribbean	FS-2305	Blue Heaven
SC-54	Vanilla Dip	CN-311	Light Ginger	FS-2350	Golden Retriever
SC-25	Crackerjack Brown	CN-312	Bright Ginger	FS-2364	Butterscotch
SC-41	Brown Cow	CN-313	Dark Ginger	FS-2364	Butterscotch
SC-13	Grapel	CN-322	Bright Plum	FS-2375	Jumpin' Jelly
SC-79	It's Sage	CN-331	Light Olive	FS-2378	Pea Soup
SC-39	Army Surplus	CN-332	Bright Olive	FS-2378	Pea Soup
SC-63	Popeye's Favorite	CN-333	Dark Olive	FS-2361	Leap Frog
SC-01	Pink-A-Boo	CN-341	Light Pink	FS-2394	Cotton Candy
SC-01	Pink-A-Boo	CN-342	Bright Pink	FS-2394	Cotton Candy
SC-70	Pink-A-Dot	CN-343	Dark Pink	FS-2393	Pretty in Pink
SC-06	Sunkissed	CN-501	Neon Yellow	FS-2349	Tweety Bird
SC-11	Blue Yonder	CN-502	Neon Blue	FS-2305	Blue Heaven
SC-77	Glo Worm	CN-503	Neon Chartreuse	FS-2359	Lime Light
SC-75	Orange-A-Peel	CN-504	Neon Orange	FS-2390	Orange Crush
SC-27	Sour Apple	CN-505	Neon Green	FS-2303	Lime Ricky
SC-87	Ruby Slippers	CN-506	Neon Coral	FS-2392	Rockin' Red
SC-74	Hot Tamale	CN-507	Neon Red	FS-2391	Red Blaze
SC-81	Cinnamon Stix	CN-508	Chutney Spice	FS-2379	Simply Cinnamon
SC-82	Tuscan Red	CN-509	Paprika Red	FS-2391	Red Blaze
SC-84	Dee John	CN-510	Earthen Moss	FS-2364	Butterscotch
SC-51	Poo Bear	CN-511	Sunflower Yellow	FS-2368	Old Yeller
SC-27	Sour Apple	CN-512	Green Apple	FS-2303	Lime Ricky
SC-40	Blueberry Hill	CN-513	Deep Berry	FS-2392	Rockin' Red

Duncan® CONCEPTS®

Underglazes for Bisque

The easiest way to add color to bisque is with Duncan® Concepts® Underglazes for Bisque. With an easy-to-use color chart, featuring light, bright and dark color values, anyone can expertly enjoy the excitement of creativity. Whether you desire translucent or solid coverage, simple designs or the detailed majolica technique, Duncan® Concepts® Underglazes for Bisque makes the Ceramic Arts experience quick and easy!

Firing range cone 06 to cone 6



Available in 2-oz. and 8-oz. squeeze bottles
Assorted colors in gallons



A balanced palette of compatible hues
make color selection easy

LIGHT		Bright, vibrant colors	
BRIGHT			
DARK		Smooth & creamy	

new!



CN 074 Really Red CN 384 Fruit Punch

Legend

1 coat coverage
3 coat coverage



CN 362 Ivory CN 244 Really White CN 241 White CN 253 Black

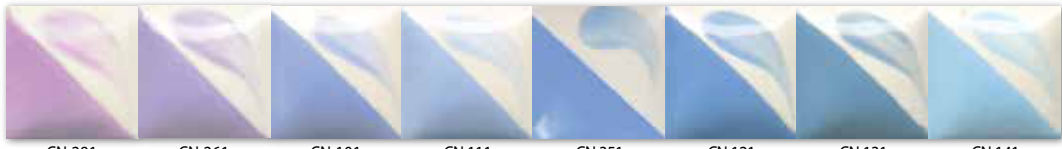


Note: Safe for use on food containers when applied to full coverage or when nontoxic, food-safe clear glaze is applied.

Refer to the Mid-Range Performance Index at www.ilovetocreate.com for cone 6 firing details by color.



Painted by Suzie Shinseki



CN 291 Light Purple CN 261 Light Grape CN 101 Light Heather CN 111 Light Delft CN 351 Light Sapphire CN 121 Light Nautical CN 131 Light Tidepool CN 141 Light Aqua

Easy for all skill levels



CN 151 Light Blue Spruce CN 271 Light Jade



CN 292 Bright Purple CN 262 Bright Grape CN 102 Bright Heather CN 112 Bright Delft CN 352 Bright Sapphire CN 122 Bright Nautical CN 132 Bright Tidepool CN 142 Bright Aqua CN 302 Bright Caribbean CN 152 Bright Blue Spruce CN 272 Bright Jade



CN 293 Dark Purple CN 263 Dark Grape CN 103 Dark Heather CN 113 Dark Delft CN 353 Dark Sapphire CN 123 Dark Nautical CN 133 Dark Tidepool

Translucent or solid coverage



CN 303 Dark Caribbean CN 153 Dark Blue Spruce



CN 161 Light Wintergreen CN 171 Light Kelp CN 181 Light Kiwi CN 191 Light Ivy CN 201 Light Grey CN 211 Light Taupe CN 221 Light Blush CN 281 Light Brown

LIGHT



CN 162 Bright Wintergreen CN 172 Bright Kelp CN 182 Bright Kiwi

Great for sponging



CN 202 Bright Grey CN 212 Bright Taupe CN 222 Bright Blush CN 282 Bright Brown CN 232 Bright Briarwood

BRIGHT



CN 163 Dark Wintergreen CN 173 Dark Kelp CN 183 Dark Kiwi CN 193 Dark Ivy CN 203 Dark Grey CN 213 Dark Taupe

Perfect for stencils



CN 233 Dark Briarwood

DARK